



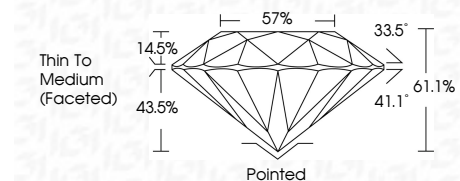
ELECTRONIC COPY

LG790609434 Report verification at igi.org



April 7, 2026 IGI Report Number LG790609434 Description LABORATORY GROWN DIAMOND Shape and Cutting Style ROUND BRILLIANT Measurements 8.17 - 8.20 X 5.00 MM

GRADING RESULTS Carat Weight 2.03 CARATS Color Grade E Clarity Grade VVS 2 Cut Grade IDEAL



ADDITIONAL GRADING INFORMATION Polish EXCELLENT Symmetry EXCELLENT Fluorescence NONE Inscription(s) LG790609434 Comments: This Laboratory Grown Diamond was created by Chemical Vapor Deposition (CVD) growth process. Type IIa



April 7, 2026 IGI Report No LG790609434 ROUND BRILLIANT 8.17 - 8.20 X 5.00 MM 2.03 CARATS E VVS 2 IDEAL 61.1% 57% Thin To Medium (Faceted) Pointed EXCELLENT EXCELLENT NONE NONE LG790609434

Comments: This Laboratory Grown Diamond was created by Chemical Vapor Deposition (CVD) growth process. Type IIa

LABORATORY GROWN DIAMOND REPORT

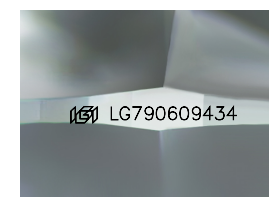
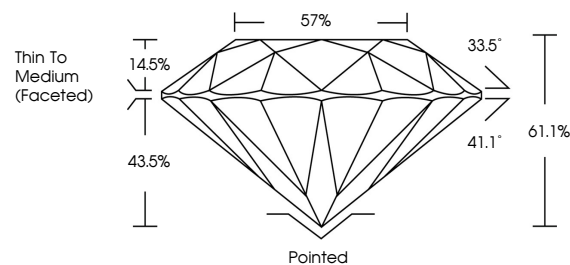
April 7, 2026 IGI Report Number LG790609434 Description LABORATORY GROWN DIAMOND Shape and Cutting Style ROUND BRILLIANT Measurements 8.17 - 8.20 X 5.00 MM

GRADING RESULTS Carat Weight 2.03 CARATS Color Grade E Clarity Grade VVS 2 Cut Grade IDEAL

ADDITIONAL GRADING INFORMATION Polish EXCELLENT Symmetry EXCELLENT Fluorescence NONE Inscription(s) LG790609434

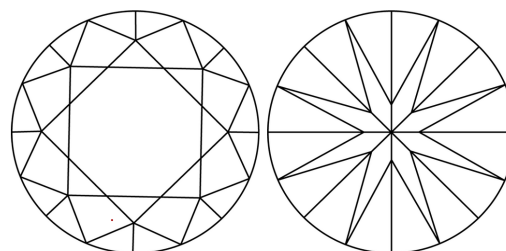
Comments: This Laboratory Grown Diamond was created by Chemical Vapor Deposition (CVD) growth process. Type IIa

PROPORTIONS



Sample Image Used

CLARITY CHARACTERISTICS



KEY TO SYMBOLS

Red symbols indicate internal characteristics. Green symbols indicate external characteristics.

COLOR

D E F G H I J Faint Very Light Light

CLARITY

FL IF VVS 1-2 VS 1-2 SI 1-2 I 1-3 Flawless Internally Flawless Very Very Slightly Included Very Slightly Included Slightly Included Included



FOR THE SUSTAINABILITY RATED CERTIFICATE, SCAN HERE →