



ELECTRONIC COPY

LABORATORY GROWN DIAMOND REPORT

February 27, 2026
IGI Report Number LG779643312
Description LABORATORY GROWN DIAMOND
Shape and Cutting Style PRINCESS CUT
Measurements 6.94 X 6.93 X 4.92 MM

GRADING RESULTS

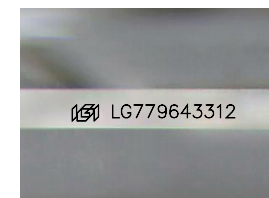
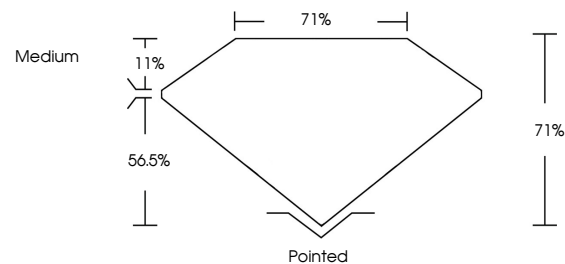
Carat Weight 2.05 CARATS
Color Grade E
Clarity Grade VVS 2

ADDITIONAL GRADING INFORMATION

Polish EXCELLENT
Symmetry EXCELLENT
Fluorescence NONE
Inscription(s) IGI LG779643312

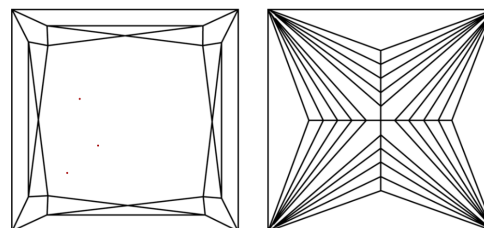
Comments: This Laboratory Grown Diamond was created by Chemical Vapor Deposition (CVD) growth process.
Type IIa

PROPORTIONS



Sample Image Used

CLARITY CHARACTERISTICS



KEY TO SYMBOLS

Red symbols indicate internal characteristics.
Green symbols indicate external characteristics.

COLOR

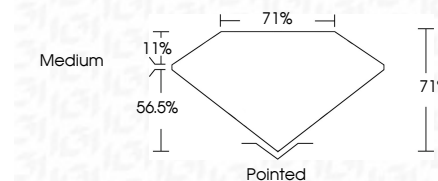
D E F G H I J Faint Very Light Light

CLARITY

FL IF VS¹⁻² VS¹⁻² SI¹⁻² I¹⁻³
Flawless Internally Flawless Very Very Slightly Included Very Slightly Included Slightly Included Included



February 27, 2026
IGI Report Number LG779643312
Description LABORATORY GROWN DIAMOND
Shape and Cutting Style PRINCESS CUT
Measurements 6.94 X 6.93 X 4.92 MM
GRADING RESULTS
Carat Weight 2.05 CARATS
Color Grade E
Clarity Grade VVS 2



ADDITIONAL GRADING INFORMATION

Polish EXCELLENT
Symmetry EXCELLENT
Fluorescence NONE
Inscription(s) IGI LG779643312
Comments: This Laboratory Grown Diamond was created by Chemical Vapor Deposition (CVD) growth process.
Type IIa



Certified SUSTAINABILITY RATED DIAMOND
SCS GLOBAL SERVICES
All certified diamonds come with an individual certificate, ONLY available at an accredited retailer
FOR THE SUSTAINABILITY RATED CERTIFICATE, SCAN HERE →



February 27, 2026
IGI Report No LG779643312
PRINCESS CUT
6.94 X 6.93 X 4.92 MM
2.05 CARATS
E
VS 2
71%
71%
Medium
Pointed
EXCELLENT
EXCELLENT
NONE
IGI LG779643312
Comments: This Laboratory Grown Diamond was created by Chemical Vapor Deposition (CVD) growth process.
Type IIa