



ELECTRONIC COPY

LG729533540
Report verification at igi.org



August 22, 2025
IGI Report Number LG729533540
Description LABORATORY GROWN DIAMOND
Shape and Cutting Style PRINCESS CUT
Measurements 5.58 X 5.54 X 3.90 MM
GRADING RESULTS
Carat Weight 1.04 CARAT
Color Grade E
Clarity Grade VVS 2

LABORATORY GROWN DIAMOND REPORT

August 22, 2025
IGI Report Number LG729533540
Description LABORATORY GROWN DIAMOND
Shape and Cutting Style PRINCESS CUT
Measurements 5.58 X 5.54 X 3.90 MM

GRADING RESULTS

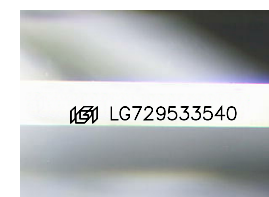
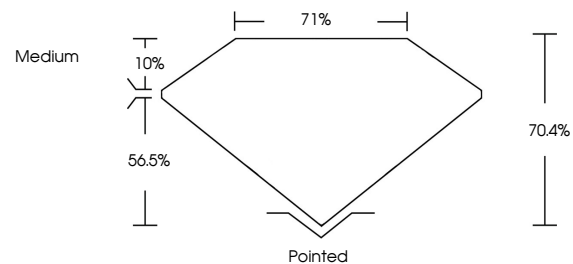
Carat Weight 1.04 CARAT
Color Grade E
Clarity Grade VVS 2

ADDITIONAL GRADING INFORMATION

Polish EXCELLENT
Symmetry EXCELLENT
Fluorescence NONE
Inscription(s) IGI LG729533540

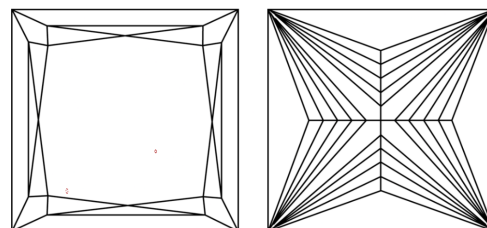
Comments: This Laboratory Grown Diamond was created by Chemical Vapor Deposition (CVD) growth process. Type IIa

PROPORTIONS



Sample Image Used

CLARITY CHARACTERISTICS



KEY TO SYMBOLS

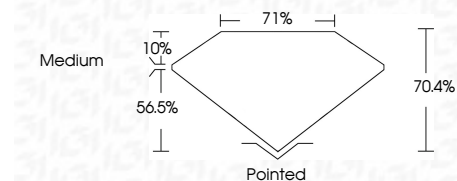
Red symbols indicate internal characteristics.
Green symbols indicate external characteristics.

COLOR

D E F G H I J Faint Very Light Light

CLARITY

IF WS 1-2 VS 1-2 SI 1-2 I 1-3
Internally Flawless Very Very Slightly Included Very Slightly Included Slightly Included Included



ADDITIONAL GRADING INFORMATION

Polish EXCELLENT
Symmetry EXCELLENT
Fluorescence NONE
Inscription(s) IGI LG729533540
Comments: This Laboratory Grown Diamond was created by Chemical Vapor Deposition (CVD) growth process. Type IIa



August 22, 2025
IGI Report No LG729533540
PRINCESS CUT
1.04 CARAT E
5.58 X 5.54 X 3.90 MM
Carat Weight
Color Grade
Clarity Grade
Depth 70.4%
Table 71%
Girdle
Medium
Pointed
Polish EXCELLENT
Symmetry EXCELLENT
Fluorescence NONE
Inscription(s) IGI LG729533540
Comments: This Laboratory Grown Diamond was created by Chemical Vapor Deposition (CVD) growth process. Type IIa