



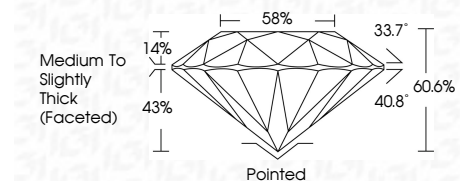
ELECTRONIC COPY

LG729533403 Report verification at igi.org



August 28, 2025 IGI Report Number LG729533403 Description LABORATORY GROWN DIAMOND Shape and Cutting Style ROUND BRILLIANT Measurements 11.06 - 11.09 X 6.71 MM

GRADING RESULTS Carat Weight 5.06 CARATS Color Grade F Clarity Grade VS 1 Cut Grade IDEAL



ADDITIONAL GRADING INFORMATION Polish EXCELLENT Symmetry EXCELLENT Fluorescence NONE Inscription(s) IGI LG729533403 Comments: This Laboratory Grown Diamond was created by Chemical Vapor Deposition (CVD) growth process. Type IIa



August 28, 2025 IGI Report No LG729533403 ROUND BRILLIANT 5.06 CARATS F VS 1 IDEAL 60.6% 58% Medium To Slightly Thick (Faceted) Pointed EXCELLENT EXCELLENT NONE IGI LG729533403 Comments: This Laboratory Grown Diamond was created by Chemical Vapor Deposition (CVD) growth process. Type IIa

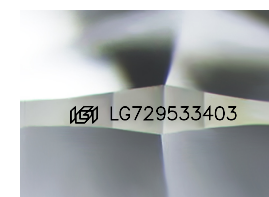
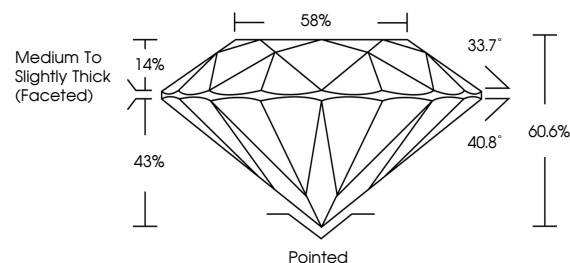
August 28, 2025 IGI Report Number LG729533403 Description LABORATORY GROWN DIAMOND Shape and Cutting Style ROUND BRILLIANT Measurements 11.06 - 11.09 X 6.71 MM

GRADING RESULTS Carat Weight 5.06 CARATS Color Grade F Clarity Grade VS 1 Cut Grade IDEAL

ADDITIONAL GRADING INFORMATION Polish EXCELLENT Symmetry EXCELLENT Fluorescence NONE Inscription(s) IGI LG729533403

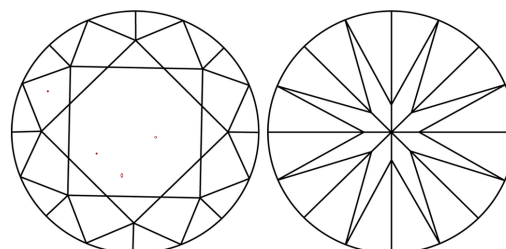
Comments: This Laboratory Grown Diamond was created by Chemical Vapor Deposition (CVD) growth process. Type IIa

PROPORTIONS



Sample Image Used

CLARITY CHARACTERISTICS



KEY TO SYMBOLS

Red symbols indicate internal characteristics. Green symbols indicate external characteristics.

COLOR

D E F G H I J Faint Very Light Light

CLARITY

IF WS 1-2 VS 1-2 SI 1-2 I 1-3 Internally Flawless Very Very Slightly Included Very Slightly Included Slightly Included Included

