



ELECTRONIC COPY

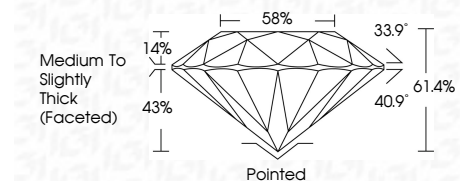
LG727570367 Report verification at igi.org



August 13, 2025 IGI Report Number LG727570367 Description LABORATORY GROWN DIAMOND Shape and Cutting Style ROUND BRILLIANT Measurements 9.15 - 9.26 X 5.67 MM

GRADING RESULTS

Carat Weight 3.00 CARATS Color Grade E Clarity Grade VVS 2 Cut Grade IDEAL



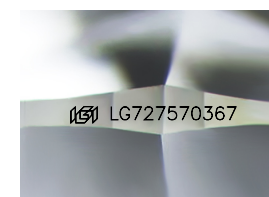
ADDITIONAL GRADING INFORMATION

Polish EXCELLENT Symmetry VERY GOOD Fluorescence NONE Inscription(s) LG727570367 Comments: This Laboratory Grown Diamond was created by Chemical Vapor Deposition (CVD) growth process. Type IIa



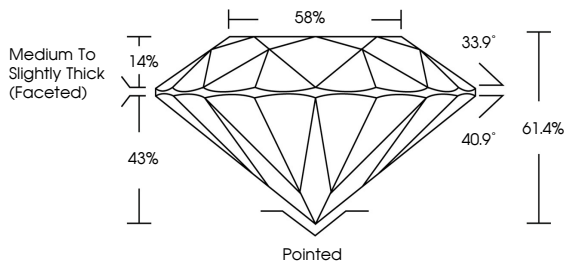
August 13, 2025 IGI Report No LG727570367 ROUND BRILLIANT 3.00 CARATS E VVS 2 IDEAL 61.4% 58% Medium To Slightly Thick (Faceted) Pointed EXCELLENT VERY GOOD NONE NONE LG727570367

Comments: This Laboratory Grown Diamond was created by Chemical Vapor Deposition (CVD) growth process. Type IIa

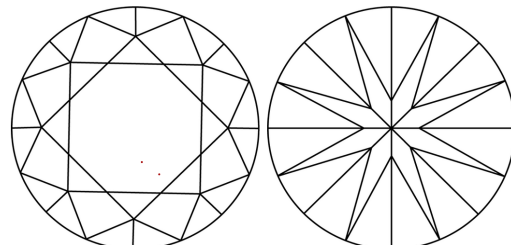


Sample Image Used

PROPORTIONS



CLARITY CHARACTERISTICS



KEY TO SYMBOLS

Red symbols indicate internal characteristics. Green symbols indicate external characteristics.

COLOR

Color scale table with categories D, E, F, G, H, I, J, Faint, Very Light, Light

CLARITY

Clarity scale table with categories IF, VS 1-2, VVS 1-2, SI 1-2, I 1-3, Internally Flawless, Very Very Slightly Included, Very Slightly Included, Slightly Included, Included



August 13, 2025 IGI Report Number LG727570367 Description LABORATORY GROWN DIAMOND Shape and Cutting Style ROUND BRILLIANT Measurements 9.15 - 9.26 X 5.67 MM

GRADING RESULTS

Carat Weight 3.00 CARATS Color Grade E Clarity Grade VVS 2 Cut Grade IDEAL

ADDITIONAL GRADING INFORMATION

Polish EXCELLENT Symmetry VERY GOOD Fluorescence NONE Inscription(s) LG727570367

Comments: This Laboratory Grown Diamond was created by Chemical Vapor Deposition (CVD) growth process. Type IIa

