



ELECTRONIC COPY

LG669443545
Report verification at igi.org



December 12, 2024

IGI Report Number **LG669443545**

Description **LABORATORY GROWN DIAMOND**

Shape and Cutting Style **PRINCESS CUT**

Measurements **9.70 X 9.64 X 6.85 MM**

GRADING RESULTS

Carat Weight **5.54 CARATS**

Color Grade **E**

Clarity Grade **VS 1**

December 12, 2024
IGI Report Number **LG669443545**
Description **LABORATORY GROWN DIAMOND**
Shape and Cutting Style **PRINCESS CUT**
Measurements **9.70 X 9.64 X 6.85 MM**

GRADING RESULTS

Carat Weight **5.54 CARATS**

Color Grade **E**

Clarity Grade **VS 1**

ADDITIONAL GRADING INFORMATION

Polish **EXCELLENT**

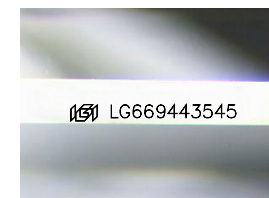
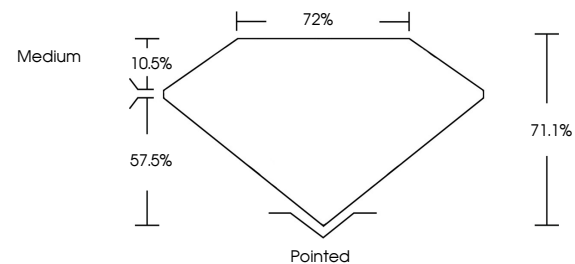
Symmetry **EXCELLENT**

Fluorescence **NONE**

Inscription(s) **IGI LG669443545**

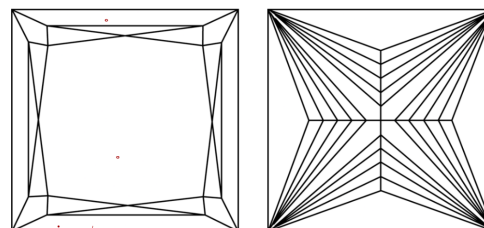
Comments: This Laboratory Grown Diamond was created by Chemical Vapor Deposition (CVD) growth process.
Type IIa

PROPORTIONS



Sample Image Used

CLARITY CHARACTERISTICS



KEY TO SYMBOLS

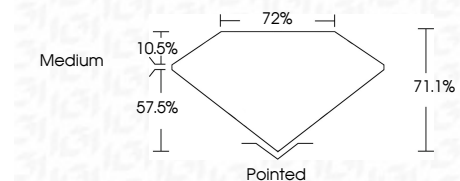
Red symbols indicate internal characteristics.
Green symbols indicate external characteristics.

COLOR

D E F G H I J Faint Very Light Light

CLARITY

| | | | | |
|---------------------|-----------------------------|------------------------|-------------------|------------------|
| IF | VS ¹⁻² | VS ¹⁻² | SI ¹⁻² | I ¹⁻³ |
| Internally Flawless | Very Very Slightly Included | Very Slightly Included | Slightly Included | Included |



ADDITIONAL GRADING INFORMATION

Polish **EXCELLENT**

Symmetry **EXCELLENT**

Fluorescence **NONE**

Inscription(s) **IGI LG669443545**

Comments: This Laboratory Grown Diamond was created by Chemical Vapor Deposition (CVD) growth process.
Type IIa



IGI



December 12, 2024
IGI Report No. LG669443545
PRINCESS CUT

5.54 CARATS
E

9.70 X 9.64 X 6.85 MM

Color Grade
Clarity Grade
Depth
Table
Girdle
Medium

71.1%
72%

Pointed
EXCELLENT
EXCELLENT
NONE
IGI LG669443545

Culet
Polish
Symmetry
Fluorescence
Inscription(s)

Comments: This Laboratory Grown Diamond was created by Chemical Vapor Deposition (CVD) growth process.
Type IIa