



ELECTRONIC COPY

LG668457975
Report verification at igi.org



December 6, 2024

IGI Report Number **LG668457975**

Description **LABORATORY GROWN DIAMOND**

Shape and Cutting Style **PRINCESS CUT**

Measurements **8.47 X 8.43 X 6.06 MM**

GRADING RESULTS

Carat Weight **3.82 CARATS**

Color Grade **E**

Clarity Grade **VS 1**

December 6, 2024
IGI Report Number **LG668457975**
Description **LABORATORY GROWN DIAMOND**
Shape and Cutting Style **PRINCESS CUT**
Measurements **8.47 X 8.43 X 6.06 MM**

GRADING RESULTS

Carat Weight **3.82 CARATS**

Color Grade **E**

Clarity Grade **VS 1**

ADDITIONAL GRADING INFORMATION

Polish **EXCELLENT**

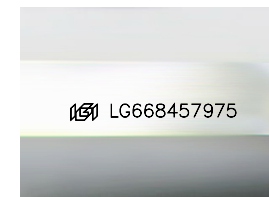
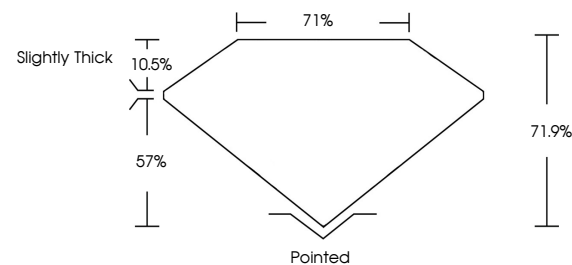
Symmetry **EXCELLENT**

Fluorescence **NONE**

Inscription(s) **LG668457975**

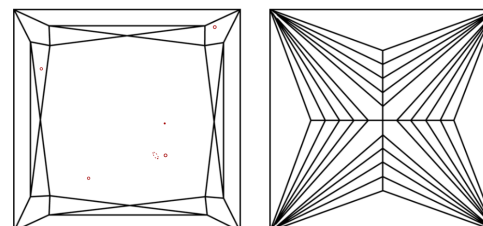
Comments: This Laboratory Grown Diamond was created by Chemical Vapor Deposition (CVD) growth process.
Type IIa

PROPORTIONS



Sample Image Used

CLARITY CHARACTERISTICS



KEY TO SYMBOLS

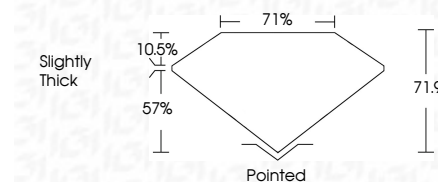
Red symbols indicate internal characteristics.
Green symbols indicate external characteristics.

COLOR

D E F G H I J Faint Very Light Light

CLARITY

| IF | VS ¹⁻² | VS ¹⁻² | SI ¹⁻² | I ¹⁻³ |
|---------------------|-----------------------------|------------------------|-------------------|------------------|
| Internally Flawless | Very Very Slightly Included | Very Slightly Included | Slightly Included | Included |



ADDITIONAL GRADING INFORMATION

Polish **EXCELLENT**

Symmetry **EXCELLENT**

Fluorescence **NONE**

Inscription(s) **LG668457975**

Comments: This Laboratory Grown Diamond was created by Chemical Vapor Deposition (CVD) growth process.
Type IIa



December 6, 2024
IGI Report No. **LG668457975**
PRINCESS CUT

3.82 CARATS
E

8.47 X 8.43 X 6.06 MM

Carat Weight
Color Grade
Clarity Grade
Depth
Table
Girdle
Slightly Thick

Pointed
EXCELLENT
EXCELLENT
NONE
NONE

LG668457975

Comments: This Laboratory Grown Diamond was created by Chemical Vapor Deposition (CVD) growth process.
Type IIa