



**ELECTRONIC COPY**

## LABORATORY GROWN DIAMOND REPORT

|                         |                             |
|-------------------------|-----------------------------|
| April 1, 2024           |                             |
| IGI Report Number       | LG628483317                 |
| Description             | LABORATORY GROWN<br>DIAMOND |
| Shape and Cutting Style | EMERALD CUT                 |
| Measurements            | 7.71 X 5.39 X 3.57 MM       |

## GRADING RESULTS

|               |            |
|---------------|------------|
| Carat Weight  | 1.51 CARAT |
| Color Grade   | D          |
| Clarity Grade | VVS 2      |

### ADDITIONAL GRADING INFORMATION

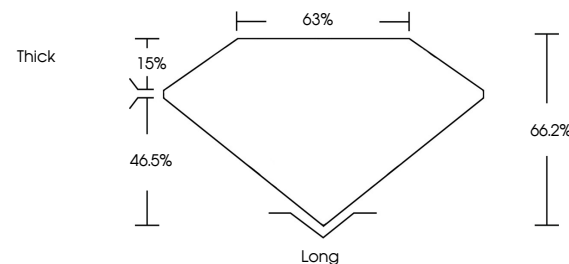
|                |   |
|----------------|---|
| Polish         | EXCELLENT   |
| Symmetry       | EXCELLENT   |
| Fluorescence   | NONE  |
| Inscription(s) |  LG628483317 |

Comments: This Laboratory Grown Diamond was created by Chemical Vapor Deposition (CVD) growth process and may include post-growth treatment.  
Type IIa

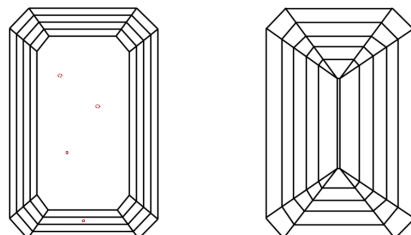
## LABORATORY GROWN DIAMOND REPORT

LG628483317  
Report verification at [igi.org](https://www.igi.org)

## PROPORTIONS



## CLARITY CHARACTERISTICS



### KEY TO SYMBOLS

Red symbols indicate internal characteristics.  
Green symbols indicate external characteristics.

LABORATORY GROWN  
DIAMOND REPORT

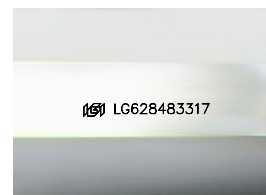
## GRADING SCALES

## CLARITY

| IF                  | VVS <sup>1-2</sup>          | VS <sup>1-2</sup>      | SI <sup>1-2</sup> | I <sup>1-3</sup> |
|---------------------|-----------------------------|------------------------|-------------------|------------------|
| Internally Flawless | Very Very Slightly Included | Very Slightly Included | Slightly Included | Included         |

**COLOR**

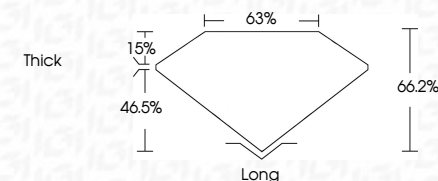
D E F G H I J Faint Very Light Light



Sample Image Used



|                         |                             |
|-------------------------|-----------------------------|
| April 1, 2024           |                             |
| IGI Report Number       | LG628483317                 |
| Description             | LABORATORY GROWN<br>DIAMOND |
| Shape and Cutting Style | EMERALD CUT                 |
| Measurements            | 7.71 X 5.39 X 3.57 MM       |
| <b>GRADING RESULTS</b>  |                             |
| Carat Weight            | 1.51 CARAT                  |
| Color Grade             | D                           |
| Clarity Grade           | VVS 2                       |



### ADDITIONAL GRADING INFORMATION

|                |                  |
|----------------|------------------|
| Polish         | EXCELLENT        |
| Symmetry       | EXCELLENT        |
| Fluorescence   | NONE             |
| Inscription(s) | (15) LG628483317 |

Comments: This Laboratory Grown Diamond was created by Chemical Vapor Deposition (CVD) growth process and may include post-growth treatment.  
Type IIa



© IGI 2020, International Gemological Institute

FD - 10 20



THIS DOCUMENT WAS PRODUCED WITH THE FOLLOWING SECURITY MEASURES: SPECIAL DOCUMENT PAPER, INK SCREENS, WATERMARK, BACKGROUND DESIGNS, HOLOGRAM AND OTHER SECURITY FEATURES NOT LISTED AND DO EXCEED DOCUMENT SECURITY INDUSTRY GUIDELINE

**www.igi.org**

April 1, 2024  
GI Report No LG628483317

|            |                       |             |               |           |
|------------|-----------------------|-------------|---------------|-----------|
| 1.61 CARAT | 1.71 X 5.69 X 3.57 MM | Color Grade | Clarity Grade | Long      |
| D          |                       |             | Depth         | EXCELLENT |
| VVS 2      |                       | Color       | Table         | EXCELLENT |
| 66.2%      |                       |             | Girdle        | NONE      |
| 65%        |                       |             | Culet         |           |
| Thick      |                       |             | Polish        |           |
|            |                       |             | Symmetry      |           |
|            |                       |             | Fluorescence  |           |

**Comments:**  
This Laboratory Grown Diamond was created by Chemical Vapor Deposition (CVD) growth process and may include post-growth treatment.